



'PROMOTING HUMAN BEHAVIOUR TOWARDS ANIMALS BY PROVIDING CARE, PROTECTION, TREATMENT AND SECURITY'

Fleecehaven News

In July, we welcomed three new arrivals to Fleecehaven; Crème, Jean and Paul. All three are ouessants, a rare breed of heritage sheep originally from the island of Ouessant in Brittany. Ouessants are renowned for their character, their hardiness and for their status as the smallest naturally occurring breed of sheep in the world. All three came from a small-holding that was being scaled back and were destined to be put to sleep if a suitable home could not be found for them. Crème is 10 and had been used for lambing for much of her life. However, on the last occasion that she had lambed, she sadly prolapsed and had not been used for breeding since. Jean and Paul are both 6 and



twins, which is, apparently, quite unusual for ouessants. On arrival, the three of them were put into one of our stables where they were able to familiarise themselves with their new surroundings. They were extremely timid and we were a little concerned about their condition. However, over a period of weeks we were able to build them up with regular feeding and, little-by-little, they started to trust us. All three are now fully integrated with the main flock, although they very much stick together as a threesome and still return to the stables at night. They have tamed down greatly and, increasingly, are quite receptive to a gentle tickle on the nose, especially if there is a biscuit involved!! We hope that they enjoy a long and happy life at Fleecehaven.

Inside this Issue

Hello Dolly!	2
LUSH New Roller Blinds	3
Gallery	4 & 5
Mossie & Lilly	6
Fund Raising	6
So Dearly Missed	7
Hay Ewe!	8
Welcome Visitors	8



Beautiful artwork by Lucy Pittaway, including greetings cards, coming soon!

# Hello Dolly! (aka Sticks)

Sticks, a beautiful Shetland sheep, joined Fleecehaven in September. We had been contacted a few weeks earlier by her owner who was looking to re-home her. She had been part of a small 'lawn mower flock' but sadly a dog attack left her the sole survivor of the group. Sticks had been injured in the attack, but thankfully her owners had managed to nurse her back to health. Knowing that sheep are flock animals, and being unable to take on any new sheep at the time, her owners were wishing to secure her future alongside some woolly friends. Arrangements were made for her to be vaccinated and drenched before moving to Fleecehaven. When Sticks first arrived she was extremely traumatised. She had lived with her owners for four years and, following the trauma of the dog attack, was now suddenly in a completely new environment. We placed her into one of our stables and kept her quiet and calm. Our vet visited and checked her over, giving her a clean bill of health. However, as is the norm, it was suggested that she remain in quarantine for a period of time, even though she was fully vaccinated – this being to protect Sticks as well as the rest of the Fleecehaven flock.



We were a little concerned that her fleece was extremely matted and that she had not been shorn for a year or two so, once settled, our shearer kindly agreed to pay us a visit and removed her heavy, felted fleece. It was huge and she must have felt considerably better once it was removed – she certainly looked very different! In order to keep

her warm without her big woolly jumper, we placed a heat lamp in her stable – she looked really cosy and warm.

Little-by-little we managed to gain Sticks' trust. Emma spent a great deal of time with her in the stable, trying to reassure her that nothing bad was going to happen and that tickles and digestive biscuits were nothing to be afraid of. It was at this point that we decided to rename her because Emma was struggling to pronounce 'Sticks'. We thought of a number of names before Emma came up with the suggestion of Dolly because she thought that the different coloured ear-tags in her ears looked like Dolly Mixtures.

Once Dolly's quarantine period was over we slowly introduced her to the other sheep. Because she was still so wild we decided to put a collar on her with an i-d tag, just in case she managed to escape. Initially we let her into the garden where she made friends with Eboni and Juliet. She also enjoyed saying hello to the main flock as they walked back and forth past the garden. Once we were confident that she felt more secure we released her into the yard. Instantly she gravitated to our other shetland sheep, as well as the three ouessants. Dolly now seems far more settled and enjoys roaming the fields with



her new friends. She really is such a sweet girl and we hope that she will enjoy a peaceful and contented life at Fleecehaven for many years.



# LUSH New Roller Blinds!

Last year we were absolutely thrilled to be given a grant by LUSH to replace the roller blinds on our large barn where the main Fleecehaven flock are housed. Our original blinds were over 15 years old and unfortunately the winding mechanisms on them was failing and the fabric was no longer waterproof. For the last three years or so we had made temporary repairs to the mechanisms and patched up the fabric the best we could, but we really had reached the point where they needed to be replaced. We contacted Galebreaker, who supplied our original blinds, and they heavily discounted the cost of their replacement for us as we are a charity. However, even with Galebreakers discount, and some generous donations that we were holding to facilitate this project, we were still unable to meet the full cost of their replacement.

We applied to LUSH for a Charity Pot Grant and explained that the replacement of these blinds would ensure that our main barn remained protected from the elements with the blinds keeping the wind and rain out, whilst allowing the air to circulate. Despite what the farming industry will have us believe, sheep do not like being out in the elements and particularly dislike the wind and rain, choosing to shelter from both when they have the opportunity to do so. However, without free-flowing air within the barn, the flock are prone to diseases such as pneumonia, hence the importance of the blinds. Replacing the blinds would also ensure that the bedding within the barn remained dry. Our olds blinds leaked and with the prevailing wind blowing towards them, any rain (of which there is much in North Devon) permeated the fabric and made a strip of about a metre along the length of the barn extremely wet, this in turn reducing the comforta-

ble, dry lying space that was available to the Fleecehaven flock.

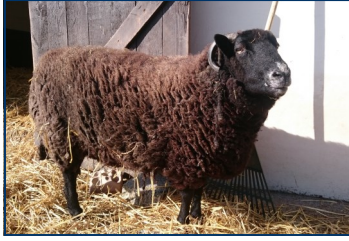
The application process was lengthy and it was over a year before we heard that we had been successful, but we were absolutely delighted to know that finally we were going to be able to significantly improve the living conditions of our main flock.

Once in receipt of the grant we set to and ordered the replacement blinds. We then needed to co-ordinate the installation of the new blinds with our annual clearing of the barn so that a new supporting post for the central blinds could be put in place. In order to save costs, much of the work was done by ourselves and it took considerably longer than we had anticipated to complete. However, the blinds are now installed and look fantastic and it is lovely going into the winter knowing that the sheep are going to be as warm, cosy and dry as possible within our big barn. They really are very lucky sheep and we are so incredibly grateful to LUSH and others for their amazing generosity. If you are able, please do support LUSH and help them support other charities by buying their Charity Pots and, if you look carefully, you may even find Lamborghini who has featured on



**LUSH  
FRESH  
HANDMADE  
COSMETICS**

# Gallery



Freddie

Ebenezer



Buster



Lamborghini



Alma



Woolly



Breakfast Time



Big George



Juliet



Angel



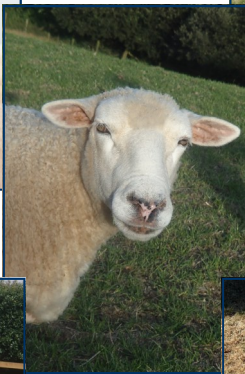
Sooty



Skittles



Pandora



Stevie



Valentine



Gracie

Martha



Granny



Bissy

Eboni



Cynthia



Alfie

## New Friends - Mossie and Lilly

On 1st December, Fleecehaven welcomed two further new arrivals; Mossie and Lilly. We had been separately approached about taking both and felt that they would make good companions for one another. Lilly, aged two, was a much loved pet whose owner sadly found herself no longer able to look after her. Mossy, was a lamb that a young girl had hand reared and become extremely attached to. They arrived at Fleecehaven within a few hours of one another and were initially housed in one of our stables. Almost instantly they became the best of friends and are now virtually inseparable.

After a short period of quarantine we slowly introduced them to the rest of the flock and over the Christmas period they enjoyed their first solo exploration of the fields at Fleecehaven. They didn't go too far, choosing to stay close to their stable, but no doubt it won't be too long before they are venturing further afield and making many new sheepy friends. Lilly has also enjoyed a visit from her favourite human friend, Susanne, who initially rescued her. It was lovely for Lilly to see her again and I think Susanne also enjoyed seeing just how happy and settled Lilly is in her new home.



Lilly



Mossie



Forever Friends

## Fund Raising

Thank you to everyone who has supported us at our various fundraising events this year. We had a fabulous time at each and every event and thoroughly enjoyed talking to friends, old and new, about the work of Fleecehaven. Thank you so much to all who purchased some of our sheep merchandise, adopted a sheep or made a donation; as a small, family run charity every penny made at these events goes directly to the care of our rescued flock and really does make a difference. Don't forget that many of our sheepy gifts can also be purchased online through our website including

scarves, bags, purses, coasters, fridge magnets and socks. Sadly we have now run out of our hugely popular vegan friendly sheep soaps and our supplier is no longer trading. If you have an interest in soap making and think that you might be able to help us out, please do get in touch!



## So Dearly Missed

As 2018 draws to a close, it is with great sadness that we think about some of our dearest boys and girls that we have had to say goodbye to. It is always heart-breaking and no matter how many times we endure the pain of losing a member of the Fleecehaven flock, it never becomes any easier. We console ourselves with the knowledge that each and every sheep at Fleecehaven has experienced the love and care that so many never know, but that doesn't make their passing any less sorrowful, or the void left by their absence any smaller. I recently found this poem which so eloquently sums up the loss of a cherished member of the family:

### *They are Gone*

*You can shed tears that they have gone  
Or you can smile because they have lived  
You can close your eyes and pray that they will come back  
Or you can open your eyes and see all that they have left  
Your heart can be empty because you can't see them  
Or you can be full of the love that you shared  
You can turn your back on tomorrow and live yesterday  
Or you can be happy for tomorrow because of yesterday  
You can remember them and only that they are gone  
Or you can cherish their memory and let them live on  
You can cry and close your mind, be empty and turn your back  
Or you can do what they would want: smile, open your eyes, love and go on.*  
*Adapted from a poem by David Harkins*



Mitzy



Woody



Willoughby Oak



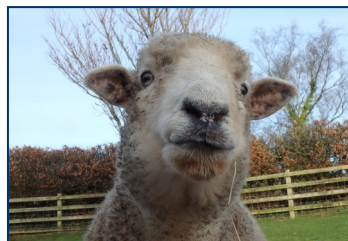
Jessie



Kylie



Morgan



Jakey



## Hay Ewe!

Whatever the season, one of the main jobs of each and every day is the replenishing of bedding and hay racks. In the second half of the year the Fleecehaven flock munched their way through 400 bales of hay and used up 230 bales of straw as bedding!! Each and every bale is carried and distributed by Emma come rain, snow or shine - she really is an absolute star. The Fleecehaven flock have no idea just how lucky they are - if only all sheep were treated with the same tender, loving care.

'Promoting humane behaviour towards animals by providing care, protection, treatment and security'

Fleecehaven  
Howley Park  
East Buckland  
North Devon, EX32 0TD

01598 760454  
admin@fleecehaven.org.uk  
www.fleecehaven.org.uk

Registered Charity No  
1111004



## Welcome Visitors

It is always lovely to welcome visitors to Fleecehaven. Those of you who have already done so, will have seen first hand just how 'family run' Fleecehaven really is. It's just Anne and Emma with a little admin support from Jayne. Anne and Emma really do enjoy sharing the Fleecehaven flock with likeminded supporters. Other than the sheep, facilities are limited, but Anne can usually rustle up a cuppa and a biscuit or piece of cake! Thank you so much to everyone who travels from far and wide to meet their sheep.

